



TITAN-100 RUDDER ANGLE INDICATOR SET

The TITAN line is a completely new navigation line which combines proven techniques with the modern day technology. The TITAN line is based upon its predecessors, the Falcon and Sigma line and combines the analogue and digital techniques into an extremely versatile navigation line. The new TITAN line is suitable for the new build as well as the replacement market.

TITAN-100

The TITAN-100 is a rudder angle indicator set, that can be used as stand alone unit, in combination with the Radio Zeeland DMP autopilots, or the display unit can be used as repeater indicator allowing repeaters in several locations. With a lifetime of 20 years or more in some cases this system is undoubtedly the most reliable on the market.

LCD display

The small LCD display in the middle of the analogue gauge provides a digital read out next to the analogue gauge. This ensures a quick and orderly overview of the provided data. General information, feedback and functions are also indicated on the LCD display.

Sensors

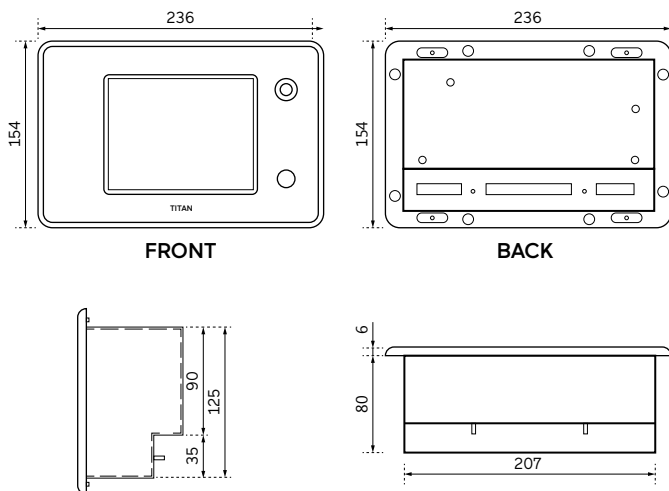
The TITAN-100 is operated with a P-100 smart rudder angle sensor, The P-100 is able to indicate all rudder angles without the use of sliding contacts. Because of the contactless rudder angle indication, the P-100 has a long and reliable lifespan.

Two-wire and Ethernet

Because the TITAN line can be connected to a network based and wired system, it has the unique possibility to use analogue and digital devices next to each other. This possibility has never been seen before in this market, providing a window of opportunities and loads of flexibility with this new navigation line.

Dimensions

Controller



**For more information,
contact one of our experts today!**

T +31 104283344
E sales.binnenvaart@radioholland.com
www.radioholland.com

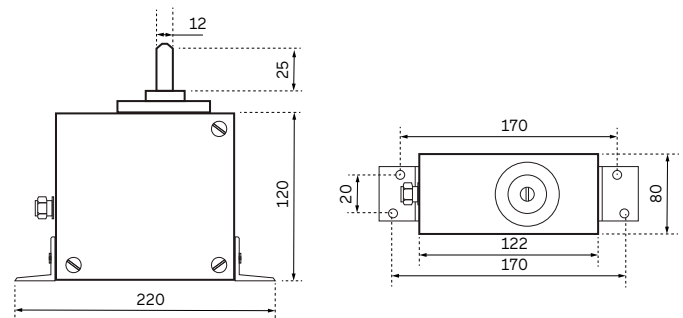
Specifications

Weight	Net weight 1,30kg
Protection	IP-50
Temperature/Humidity	0 to +55°C / 0 to 90% non-condensing
Main Supply / Backup	18-36VDC fused @900mA self recovering
Amperage	< 1A
Outputs	External dimmer 15VDC PWM max of 150mA 3x TITAN-100/150, or repeater 1 - 0 - 1mA Extern on/off 15VDC 1x Ethernet port
Inputs	P-100 or RZ610 rudder angle transmitter 1x Ethernet port

P-100 Sensor specifications

Main Supply	12-36V DC.
Amperage	Less than 200mA.
- Non-contact magnetic recording angle.	
Resolution	0,5°
Zero-point adjustable over the entire field line. 360° mechanical and electrical rotation. NMEA RSA output signal (not galvanically separated) -10V to +10V analog output, galvanically separated DIP switch selectable port feedback unit or starboard feedback unit.	

Sensor P-100



Pricing is subject to exchange rates.

ALWAYS THERE. EVERYWHERE.