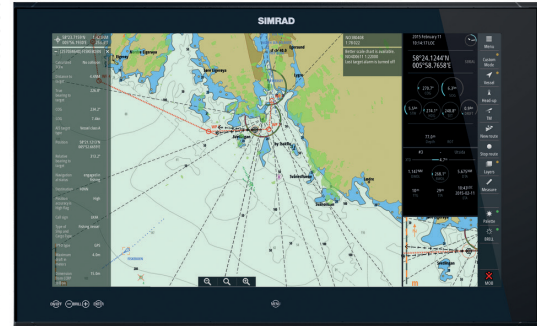




# M5000 Series Widescreen Marine Monitors

M5016, M5019, M5024 and M5027

Simrad M5000 Series marine monitors are available in 16, 19, 24 and 27-inch widescreen sizes, and are IEC62388 ed.1 compliant for use as part of a type-approved Simrad radar system. The 24-inch M5024 and 27-inch M5027 are also IHO S-52 colour calibrated for ECDIS use, and forms part of the type-approved Simrad ECDIS system.



▲ M5024

## HD/Full HD Widescreen

The M5016 (16-inch) and M5019 (19-inch) monitors have a native resolution of 1366 x 768 pixels, in 16:9 widescreen ratio suitable for use with widescreen-optimised Simrad radar systems. The M5024 (24 inch) and M5027 (27 inch) monitors have a 'Full HD' native resolution of 1920 x 1080, in the same 16:9 ratio. All M5000 series displays feature an adjustable backlight with maximum 300-nit brightness suitable for pilothouse use.

## Flush-Mount Installation

Ideal for flush-mount installation in a pilothouse or bridge console, all monitor sizes in the M5000 Series have a low profile of just 8mm. Flush mounting is possible with the included rear brackets or front screws, and VESA mounting is supported with an optional bracket.

## All-Glass Look, Optically Bonded

A seamless glass front panel incorporating capacitive touch-sensitive menu keys offers a clean and distraction-free look, and is suitable for side-by-side mounting of multiple displays without the interruption of raised bezels or controls. M5000 Series monitors feature an LCD panel optically bonded to the display's glass surface to eliminate fogging, while Anti-Reflective and Anti-Fingerprint coatings help to deliver optimal visibility in all conditions.

## Main Features

- 15.6/18.5/24/27" LCD panel in 16:9 widescreen format
- High-resolution 1366 x 768-pixel display (M5016 & M5019)
- Full HD resolution 1920 x 1080-pixel display (M5024 & M5027)
- Suitable for use as part of a type-approved Simrad radar system (IEC62388 ed.1 compliant)
- Suitable for use as part of a type-approved Simrad E5000 ECDIS system (IHO S-52 colour calibrated) (M5024 & M5027)
- Optically bonded to eliminate fogging
- Low profile (8mm) flush-mount installation
- All-glass front panel with touch sensitive menu keys
- IP66 water resistant when flush mounted

Technical specifications overleaf.

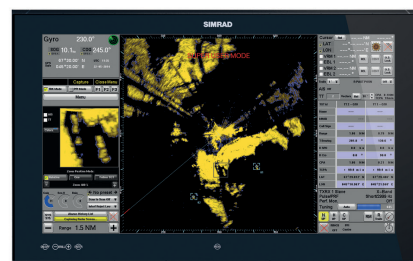


 Wheelmark Approved

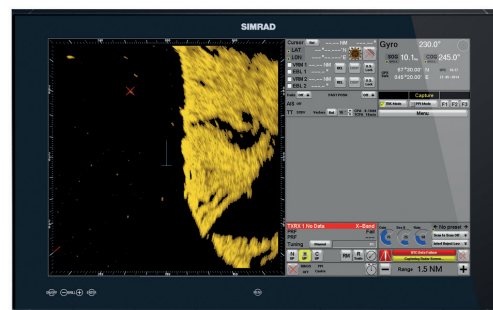
[www.navico.com/commercial](http://www.navico.com/commercial)

# Technical Specifications

▶ DISPLAY	M5016	M5019	M5024	M5027
Display Size (diagonal)	15.6"	18.5"	24.0"	27.0"
Display Type	Colour TFT LCD			
Display Resolution (pixels)	1366 x 768		1920 x 1080	
Backlight	300 nit			
▶ TECHNICAL / ENVIRONMENTAL				
Operating Temperature	-15°C to 55°C			
Storage Temperature	-20°C to 60°C			
Waterproof Rating	IPX6 when flush mounted			
Width	400 mm / 15.75"	478 mm / 18.8"	625 mm / 24.6"	675 mm / 26.57"
Height	260 mm / 10.2"	305 mm / 12.0"	386 mm / 15.2"	420 mm / 16.54"
Depth	66 mm / 2.6"			
Weight	3.6 kg / 7.9 lb.	4.6 kg / 10.1 lb.	6.6 kg / 14.6 lb.	9 kg / 20 lb.
▶ POWER				
Supply Voltage	12/24 VDC (9-31.2 VDC)			
Power Consumption	12W	13W	30W	30W
▶ INTERFACES				
Video Inputs	1x HDMI, 1x DVI port, 2x composite NTSC/PAL (video camera input)			
Control	1x NMEA2000 network connector, 1x serial port			



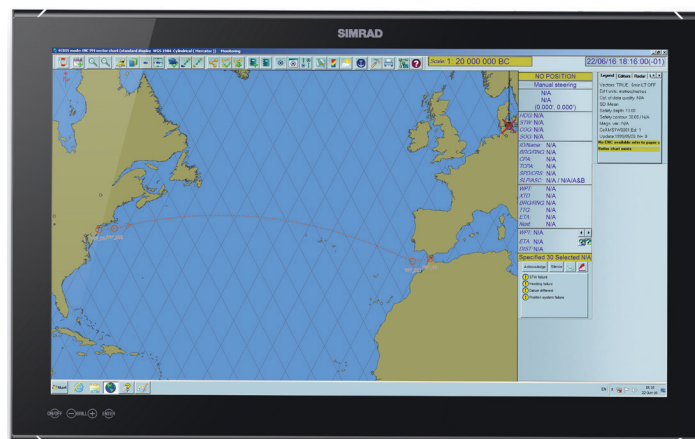
▲ M5016



▲ M5019



▲ M5024



▲ M5027

COMPARISON TABLE				
	Display Size (diagonal)	Resolution (pixels)	Suitable for Radar Systems (IEC62388 ed.1 compliant)	Suitable for ECDIS (IHO S-52 colour calibrated)
M5016	15.6"	1366 x 768	YES	NO
M5019	18.5"			
M5024	24.0"	1920 x 1080	YES	YES
M5027	27.0"			

PART NUMBER	DESCRIPTION
000-12209-001	M5016 monitor
000-12210-001	M5019 monitor
000-11781-001	M5024 monitor
000-12726-001	M5027 monitor

DISTRIBUTED BY:

Navico Asia Pacific Tel: +64 9 925 4500 Email: sales.apacnz@navico.com  
 Navico Americas Tel: +1 832 377 9578 Email: sales.americas@navico.com  
 Navico EMEA Tel: +44 1794 510 010 Email: sales.emea@navico.com

