



THOR-500

Compact Autopilot

The THOR line is a complete line of navigation products in which proven techniques are combined with present-day technology.

The THOR line is based on its predecessors – the Sigma, Titan and Falcon lines – and combines analogue and digital technologies in a versatile line of navigation products. The THOR line is suitable for both new construction and the replacement market.



The THOR-500 is the compact autopilot of Radio Zeeland. This unit has a Rate of Turn indicator and rudder position indicator in the same housing. This makes the autopilot compact and easy to install. The THOR-500 works in combination with the THOR-650 steering lever. This autopilot is used when the room for installation in the wheel house is limited. The THOR-650 steering levers are small enough to fit into the arm rest of your seat, contributing to a flexible and user-friendly system.

LED display

The small LED display provides a digital reading next to the analog meter for a quick and clear overview of the data provided. General information, feedback and functions are also indicated on the LED display.

Dimming

The THOR-500 display unit comes with a dimmer and can be dimmed synchronously with the rest of the Radio Zeeland system. The unit can also be dimmed by another THOR unit.

Colored scale illumination

The scale of the display unit is illuminated with LED background lighting. The lighting can be set to three different colors: red, yellow or blue, so that night vision can be adjusted to personal preferences.

Extensions

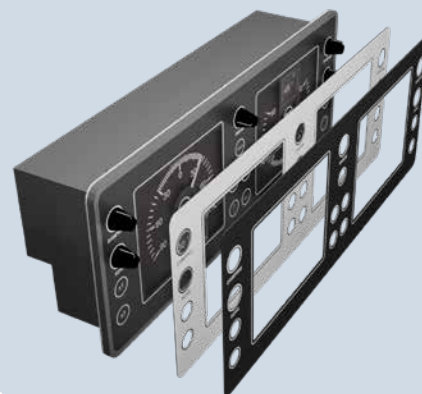
The THOR-500 autopilot is a complete pilot in its own right but can be extended. Additional bend indicators or rudder position indicators can be connected as well as a fluxgate-compass and extra THOR-650 steering levers.

Sensors

Like the THOR-550, the THOR-500 is connected to the junction box P-503, which is connected to the sensors P-100 and P-300 for bend speed and rudder position indication.

Look and feel

The THOR instruments have a slightly lower top, so that an adjustable front can be added. These fronts are available in any color and lay-out you want. The fronts are available in Gorilla Glass or foil.



The THOR-500 has been approved under number e-01-081.

Technical specifications

Display unit

Housing	Powder-coated aluminum
Dimensions	395 x 154 x 80mm
Weight	Net weight 2.0kg
Security	IP-50
Temperature	0 to +55°C
Humidity	0 to 90% non-condensing

Electrical specifications

Main power supply	24 -10% / +30%
Backup power supply	24 -10% / +30%
Amperage	< 1A (without repeaters)
Power consumption	< 1A

Optical specifications

Rudder position indicator scale	90° - 0° - 90°
Bend indicator scale	90° - 0° - 90° or 270° - 0° - 270°
Dimmer range	5-100%
Colors lighting	red / blue / yellow

Inputs

- 1x NMEA in IEC 61162 (HDM or HDT or HDG and VTG)
- 1x Ethernet port

Outputs

- External dimmer 15VDC PWM with a maximum of 150mA
- Repeater 0-1mA
- 1x NMEA in IEC 61162
- Analog output for 1mA rudder position indicator
- Analog output for 1mA rudder bend indicator
- 1x Ethernet port

Declaration of conformity

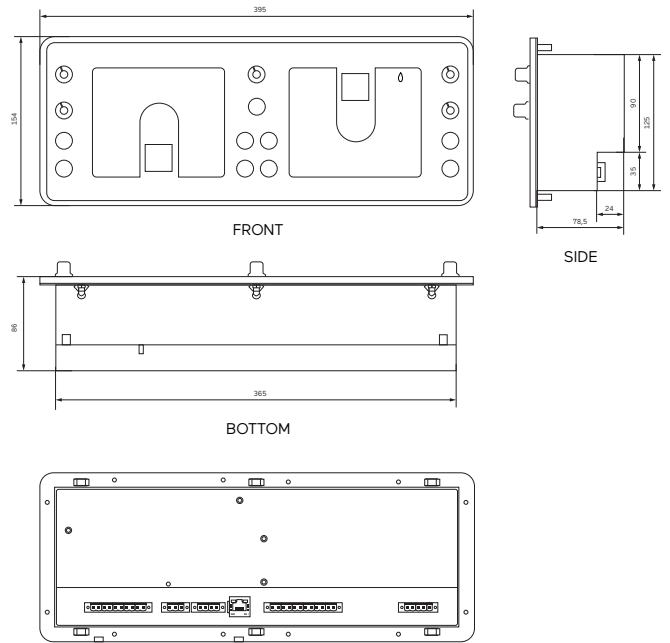
EN 60945 (IEC 945, third edition: 1996-11) Chapters 9, 10, 11 and 12

Delivery package

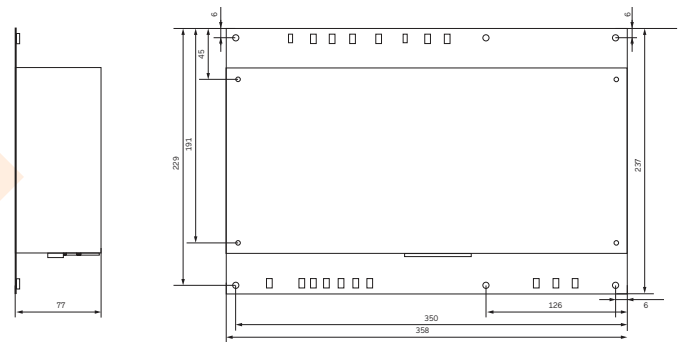
- THOR-500 display unit
- The THOR-500 Manual
- THOR-650 steering lever
- The THOR-650 Manual
- P-503 junction box
- The P-503 Manual
- P-100 rudder position sensor
- The P-100 Manual
- The P-300 gyrocompass
- The P-300 manual
- Assembly set

Dimentional Diagrams

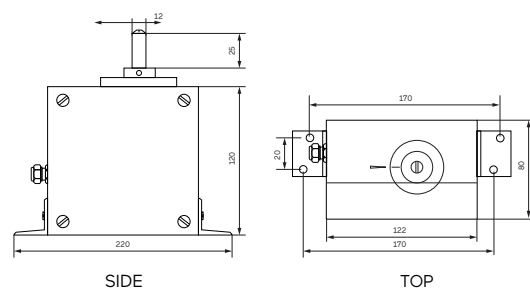
Display unit



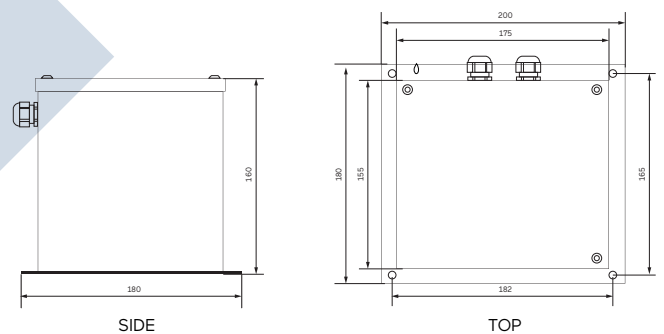
P-503 Junction box



P-100 Sensor

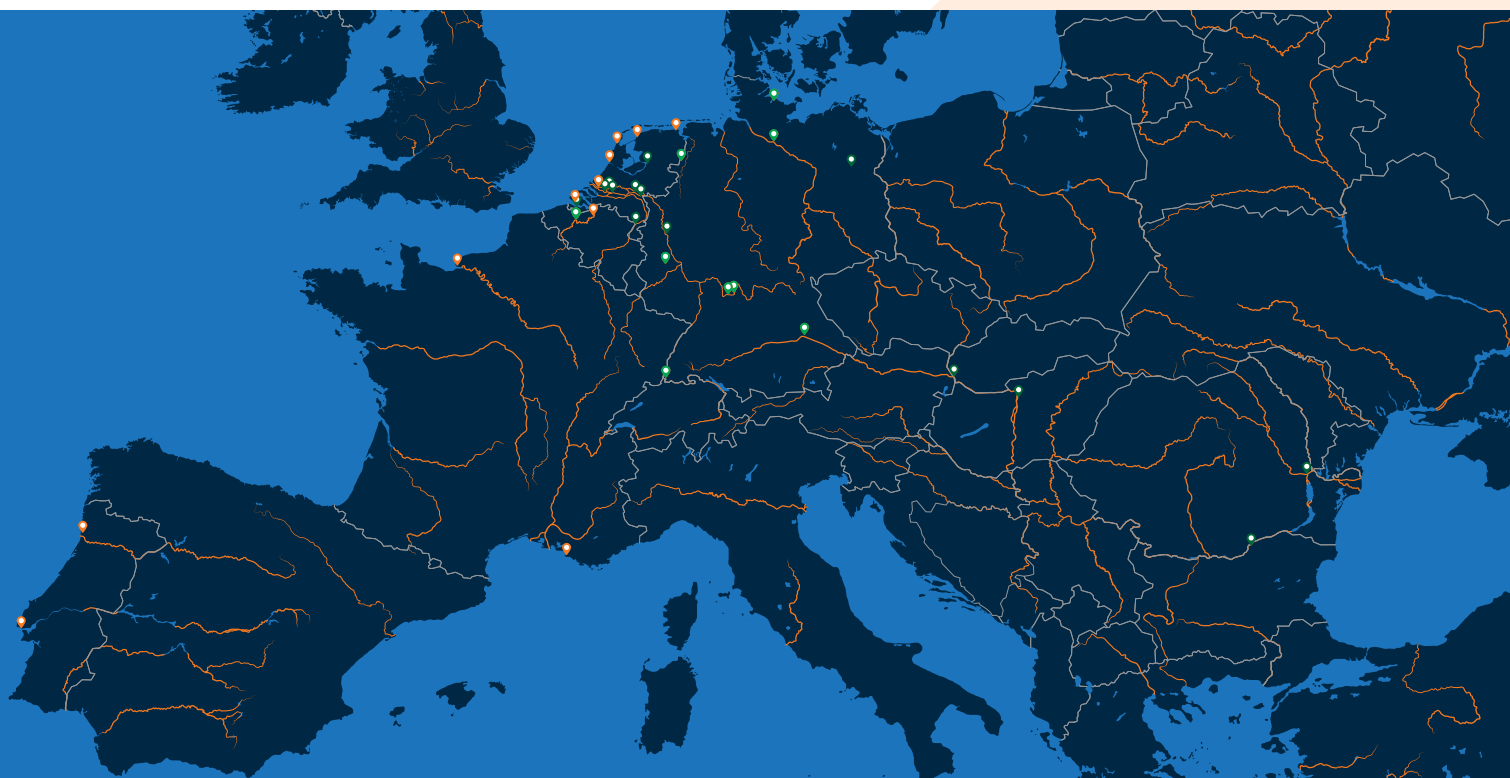


P-300 Gyrocompass



DEALER NETWORK

Radio Holland offers inland shipping entrepreneurs and shipping companies quick and efficient support, service and maintenance. Wherever you are, a professional technical team is at your service 24/7 to solve any problems fast. Besides, our extensive dealer network is always at your disposal, wherever you are, from any berth in the Netherlands to all European inland waterways.



Netherlands: Radio Holland Netherlands (Rotterdam, Flushing, IJmuiden, Den Helder, Harlingen & Delfzijl) | Werkina Werkendam (Werkendam) | Van Tiem (Wamel) | Gebofa Maritiem (Meppel) | Leeuwenstein Scheepsinstallaties (Dordrecht) | Vissers en van Dijk (Maasbracht) | Novio Nautic (Nijmegen) | DMT (Hardinxveld-Giessendam) | Navimar (Terneuzen). **Germany:** Kadlec & Brödlin (Duisburg) | E&M Engel & Meier (Berlijn) | Tech.Serv. T Schwerdtfeger (Nachtsheim) | Krebs Elektrotechnik (Efringen-Kirchen) | Thitronik Marine (Kiel) G & M Tiedemann (Börnsen) | MSG (Dorfprozelten) | EnBaj (Marktheidenfeld) | Schaffberger Funktechnik (Pielenhofen). **Belgium:** Van Stappen & Cada (Antwerpen) | De Backer Scheepselectro (Mariakerke) | Bart Desmidt (Mariakerke). **France:** Radio Holland France (Le Havre, Marseille). **Austria:** Öswag Werft (Linz). **Portugal:** Radio Holland Portugal (Lisbon, Gafanha da Nazaré, Matosinhos). **Slovakia:** Metalcon s.r.o. (Bratislava). **Bulgaria:** Int.Marine Technologies Ltd (Rousse). **Hungary:** Adria-Duna Trade (Budapest) **Romania:** SC Marine Tech Solutions SRL (Galati).

Radio Holland Netherlands

P.O. Box 5068
3008 AB Rotterdam

T +31 10 428 33 71
E sales.binnenvaart@radioholland.com
www.radioholland.com

 [linkedin.com/company/radio-holland](https://www.linkedin.com/company/radio-holland)
 [facebook.com/radiohollandgroup](https://www.facebook.com/radiohollandgroup)
 [instagram.com/radio.holland/](https://www.instagram.com/radio.holland/)

 **RADIO
HOLLAND**

ALWAYS THERE. EVERYWHERE.