



# THOR-550

## Autopilot

The THOR line is a complete line of navigation products in which proven techniques are combined with present-day technology.

The THOR line is based on its predecessors – the Sigma, Titan and Falcon lines – and combines analogue and digital technologies in a versatile line of navigation products. The THOR line is suitable for both new construction and the replacement market.



The THOR-550 control unit is one of the Radio Zeeland autopilots. Together with the P-503 junction box, the THOR-100 rudder position indicator and an optional THOR-300 Rate of Turn indicator the THOR-550 is a complete autopilot. This system has the unique possibility of being connected to every approved Rate of Turn indicator via the P-503 junction box and the P-100 sensor, as the rudder position is indicated on the LED display of the THOR-550.

### **Steering**

The THOR-550 provides three ways to steer the vessel: by a Rate of Turn indicator pilot, by a follow-up steering system, or by a second pilot.

### **Additions**

In some cases, you may want to extend your autopilot with additional indication instruments or repeaters. This is possible with the THOR-550. Whether one or multiple additional THOR-550 or THOR-650 devices are used, your wheel house capability can be extended in many ways if you install the THOR-550 autopilot.

### **Dimming**

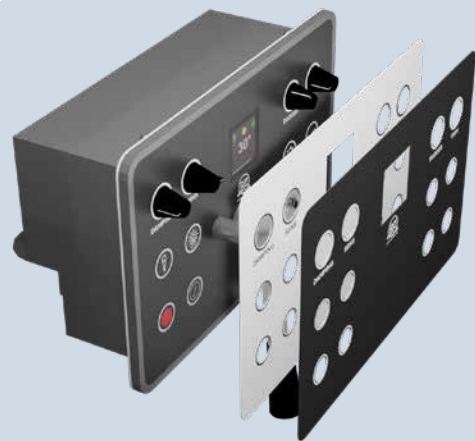
The buttons and meters of the THOR-550 are illuminated with EL background lighting. The THOR-550 comes with a dimming system that can be synchronized with other Radio Zeeland devices.

### **LED display**

The small LED display provides a digital reading of the rudder position, alarms, functions, and indicators for a quick and clear overview of the information provided.

### **Look and feel**

The THOR instruments have a slightly lower top, so that an adjustable front can be added. These fronts are available in any color and lay-out you want. The fronts are available in Gorilla Glass or foil.



## Technical specifications

### Display unit

Housing	Powder-coated aluminum
Dimensions	236 x 154 x 80mm
Weight	Net weight 1.35kg
Security	IP-50
Temperature	0 to +55°C
Humidity	0 to 90% non-condensing

### Electrical specifications

Main power supply	18-36VDC fused @900mA self-recovering
Backup power supply	18-36VDC fused @900mA self-recovering
Amperage	< 1A (without repeaters)
Power consumption	< 1.0A

### Inputs/Outputs

- External dimmer 15VDC RWM with a maximum of 150mA
- Repeater -1 | 0 | 1mA
- NMEA in IEC 61162 (ROT)
- 1x Ethernet port

### Declaration of conformity

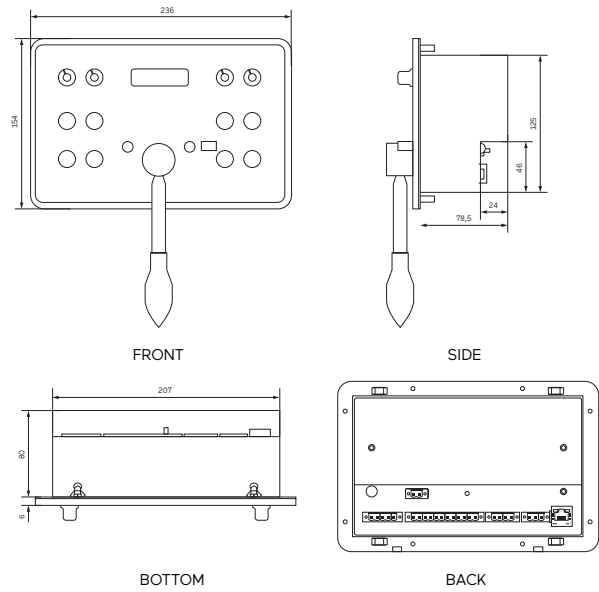
- EN 60945 (IEC 60945: 2002, including corrigendum 1:2008) Chapters 9, 10, 11 and 12

### Delivery package

- The THOR-550 display unit
- The THOR-550 manual
- Assembly set

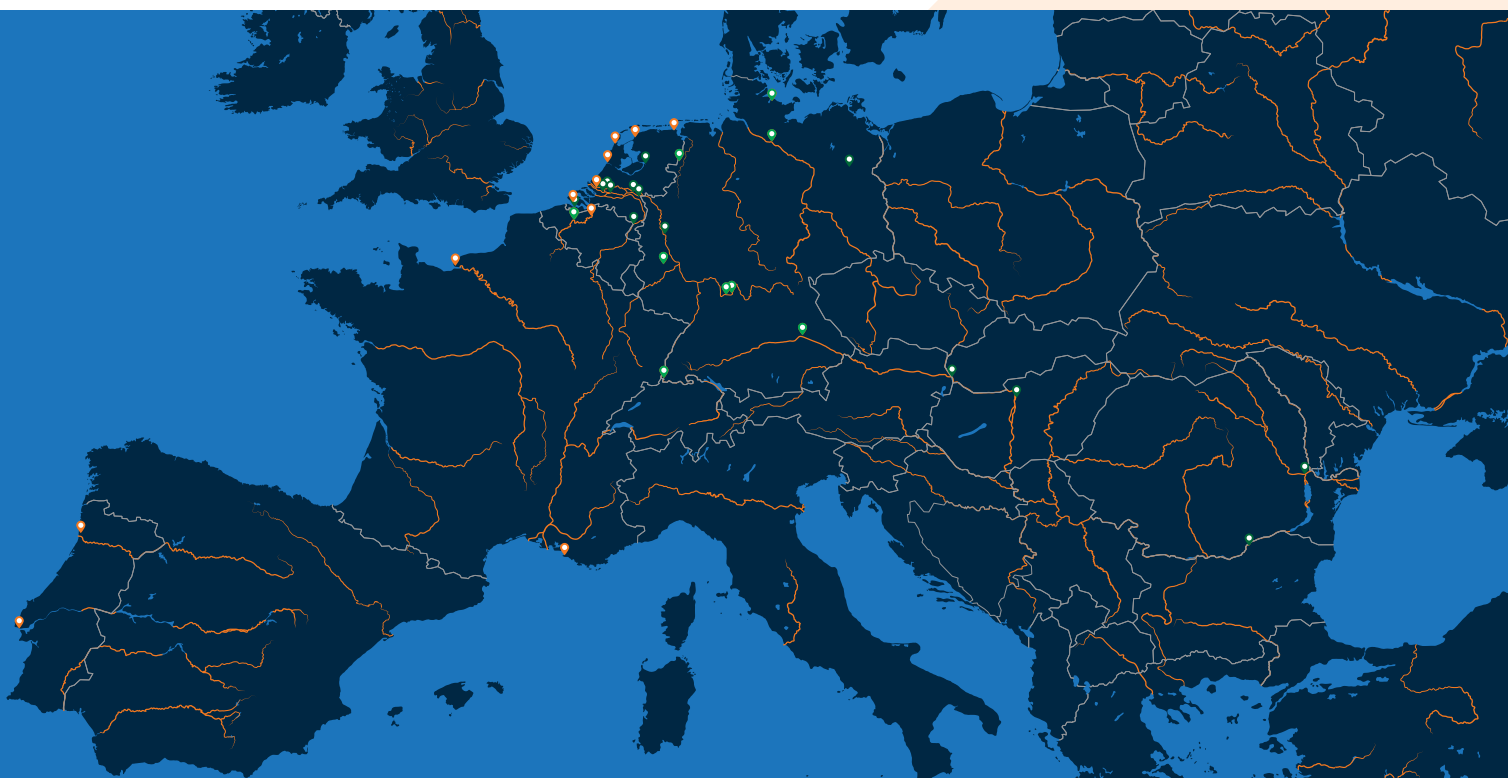
## Dimensional drawings

### Display Unit



# DEALER NETWORK

Radio Holland offers inland shipping entrepreneurs and shipping companies quick and efficient support, service and maintenance. Wherever you are, a professional technical team is at your service 24/7 to solve any problems fast. Besides, our extensive dealer network is always at your disposal, wherever you are, from any berth in the Netherlands to all European inland waterways.



**Netherlands:** Radio Holland Netherlands (Rotterdam, Flushing, IJmuiden, Den Helder, Harlingen & Delfzijl) | Werkina Werkendam (Werkendam) | Van Tiem (Wamel) | Gebofa Maritiem (Meppel) | Leeuwenstein Scheepsinstallaties (Dordrecht) | Vissers en van Dijk (Maasbracht) | Novio Nautic (Nijmegen) | DMT (Hardinxveld-Giessendam) | Navimar (Terneuzen). **Germany:** Kadlec & Brödlin (Duisburg) | E&M Engel & Meier (Berlijn) | Tech.Serv. T Schwerdtfeger (Nachtsheim) | Krebs Elektrotechnik (Efringen-Kirchen) | Thitronik Marine (Kiel) G & M Tiedemann (Börnsen) | MSG (Dorfprozelten) | EnBaj (Marktheidenfeld) | Schaffberger Funktechnik (Pielenhofen). **Belgium:** Van Stappen & Cada (Antwerpen) | De Backer Scheepselectro (Mariakerke) | Bart Desmidt (Mariakerke). **France:** Radio Holland France (Le Havre, Marseille). **Austria:** Öswag Werft (Linz). **Portugal:** Radio Holland Portugal (Lisbon, Gafanha da Nazaré, Matosinhos). **Slovakia:** Metalcon s.r.o. (Bratislava). **Bulgaria:** Int.Marine Technologies Ltd (Rousse). **Hungary:** Adria-Duna Trade (Budapest) **Romania:** SC Marine Tech Solutions SRL (Galati).

## Radio Holland Netherlands

P.O. Box 5068  
3008 AB Rotterdam

T +31 10 428 33 71  
E [sales.binnenvaart@radioholland.com](mailto:sales.binnenvaart@radioholland.com)  
[www.radioholland.com](http://www.radioholland.com)

[in linkedin.com/company/radio-holland](https://www.linkedin.com/company/radio-holland)  
[f facebook.com/radiohollandgroup](https://www.facebook.com/radiohollandgroup)  
[@ instagram.com/radio.holland/](https://www.instagram.com/radio.holland/)



ALWAYS THERE. EVERYWHERE.