



THOR-700

Intercom

The THOR line is a complete line of navigation products in which proven techniques are combined with present-day technology.

The THOR line is based on its predecessors – the Sigma, Titan and Falcon lines – and combines analogue and digital technologies in a versatile line of navigation products. The THOR line is suitable for both new construction and the replacement market.



The THOR-700 main station is an intercom that runs on a two-wire system and can be connected to ten substations. The strength of this intercom system is its simplicity, with intuitive control elements and a simple lay-out. With all call functions, selectable priority per channel and call option per channel the THOR-700 is a comprehensive intercom device.

Intercom main station

The THOR-700 is an intercom to which stations with a call-back option can be connected. The system supports up to ten substations. The intercom provides semi-duplex communication with all substations, and general calls are also possible.

Additions

Call buttons can be added on the intercom devices, so that the person who is near the THOR-700 intercom can be called. A foot-operated switch and a gooseneck microphone can also be connected to the intercom system.

Indicators

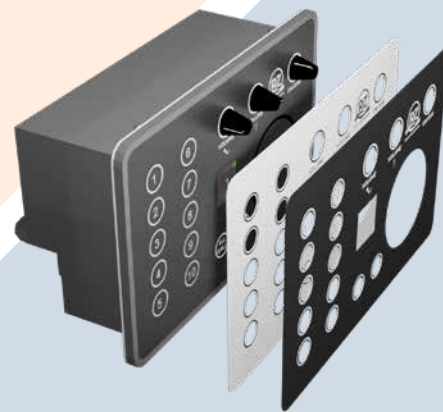
The chosen channel is announced on the LED display, which can be dimmed by means of the general dimming function.

Lay-out

The lay-out of the THOR-700 has been kept as simple as possible to provide a quick overview of the activated stations.

Look and feel

The THOR instruments have a slightly lower top, so that an adjustable front can be added. These fronts are available in any color and lay-out you want. The fronts are available in Gorilla Glass or foil.



Technical specifications

Display unit housing

Housing	Powder-coated aluminum
Dimensions	236 x 154 x 80mm
Weight	Net weight 1.9kg
Security	IP-50
Temperature	0 to +55°C
Humidity	0 to 90% non-condensing

Electrical specifications

Main power supply	18-36VDC
Backup power supply	18-36VDC
Amperage	< 2A
Optical specifications	
Dimmer range	5-100%

Acoustic specifications

- Adjustable speaking level
- Adjustable listening level
- Warning signal on every station
- All call facilities

Outputs

- 5 outputs for substations P-701 / P-702 / P-711
- Alarm contact 24VDC 1A
- P-710 interface box

Inputs

- Input for gooseneck microphone
- Input for foot-operated switch

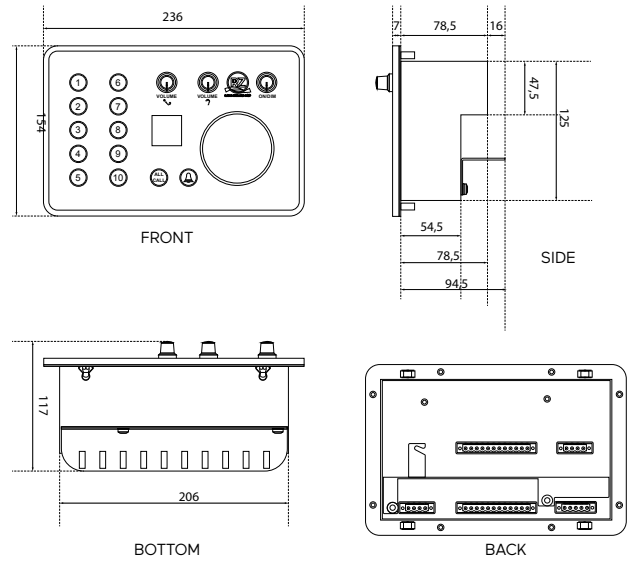
Declaration of conformity

EN 60945 (IEC 945, third edition: 1996-11) Chapters 9, 10, 11 and 12

Delivery package

- The THOR-700 Main unit
- The THOR-700 Manual
- Assembly set

Dimensions



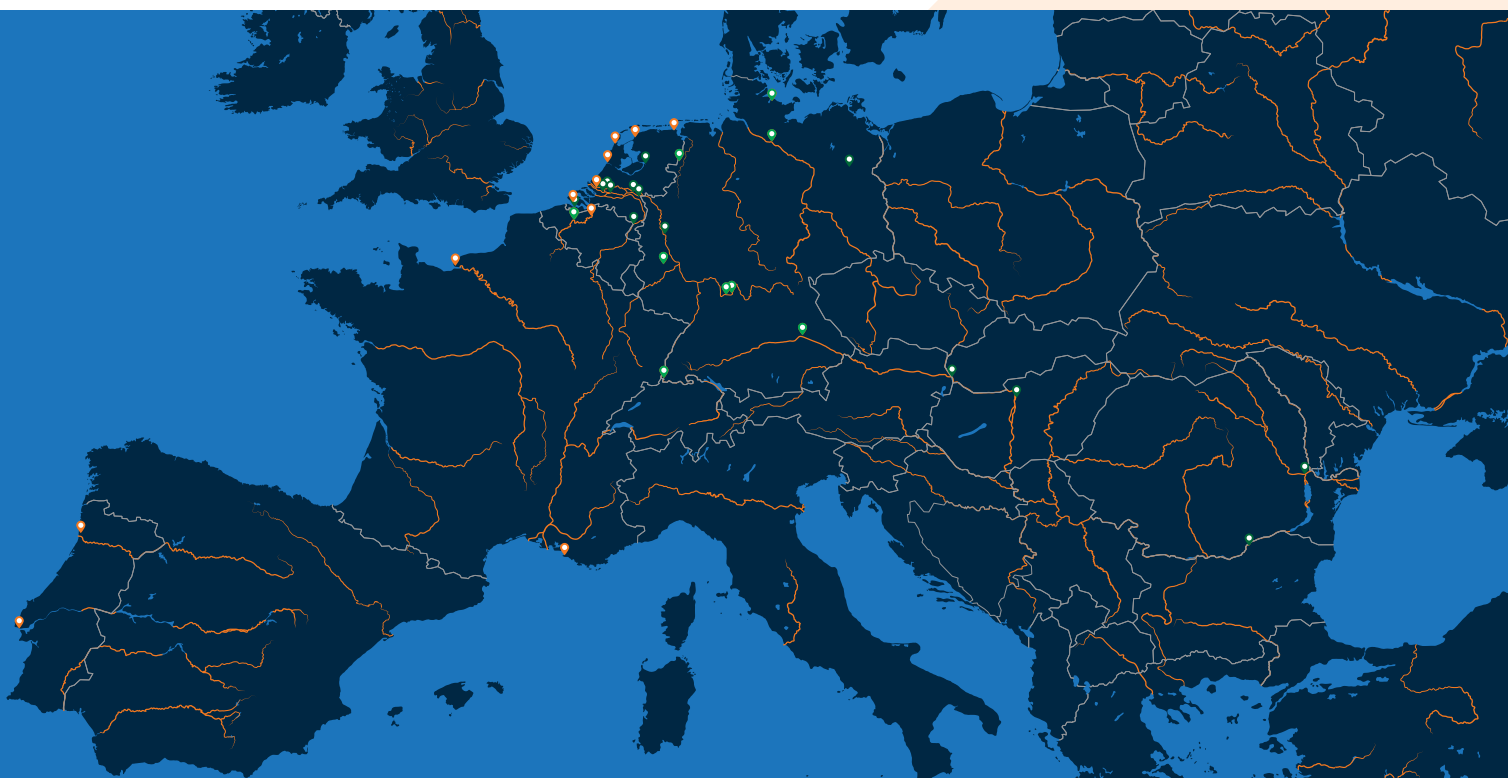
Peripherals

- Exterior speaker
- P-702 Interior speaker in both white and black
- P-711/P-712 Engine room set
- Foot-operated switch
- P-705 Push button IP67
- P-704 Gooseneck microphone
- P-706 Push button interior
- P-708 Push button interior with private switch



DEALER NETWORK

Radio Holland offers inland shipping entrepreneurs and shipping companies quick and efficient support, service and maintenance. Wherever you are, a professional technical team is at your service 24/7 to solve any problems fast. Besides, our extensive dealer network is always at your disposal, wherever you are, from any berth in the Netherlands to all European inland waterways.



Netherlands: Radio Holland Netherlands (Rotterdam, Flushing, IJmuiden, Den Helder, Harlingen & Delfzijl) | Werkina Werkendam (Werkendam) | Van Tiem (Wamel) | Gebofa Maritiem (Meppel) | Leeuwenstein Scheepsinstallaties (Dordrecht) | Vissers en van Dijk (Maasbracht) | Novio Nautic (Nijmegen) | DMT (Hardinxveld-Giessendam) | Navimar (Terneuzen). **Germany:** Kadlec & Brödlin (Duisburg) | E&M Engel & Meier (Berlijn) | Tech.Serv. T Schwerdtfeger (Nachtsheim) | Krebs Elektrotechnik (Efringen-Kirchen) | Thitronik Marine (Kiel) G & M Tiedemann (Börnsen) | MSG (Dorfprozelten) | EnBaj (Marktheidenfeld) | Schaffberger Funktechnik (Pielenhofen). **Belgium:** Van Stappen & Cada (Antwerpen) | De Backer Scheepselectro (Mariakerke) | Bart Desmidt (Mariakerke). **France:** Radio Holland France (Le Havre, Marseille). **Austria:** Öswag Werft (Linz). **Portugal:** Radio Holland Portugal (Lisbon, Gafanha da Nazaré, Matosinhos). **Slovakia:** Metalcon s.r.o. (Bratislava). **Bulgaria:** Int.Marine Technologies Ltd (Rousse). **Hungary:** Adria-Duna Trade (Budapest) **Romania:** SC Marine Tech Solutions SRL (Galati).

Radio Holland Netherlands

P.O. Box 5068
3008 AB Rotterdam

T +31 10 428 33 71
E sales.binnenvaart@radioholland.com
www.radioholland.com

[in linkedin.com/company/radio-holland](https://www.linkedin.com/company/radio-holland)
[f facebook.com/radiohollandgroup](https://www.facebook.com/radiohollandgroup)
[@ instagram.com/radio.holland/](https://www.instagram.com/radio.holland/)



ALWAYS THERE. EVERYWHERE.